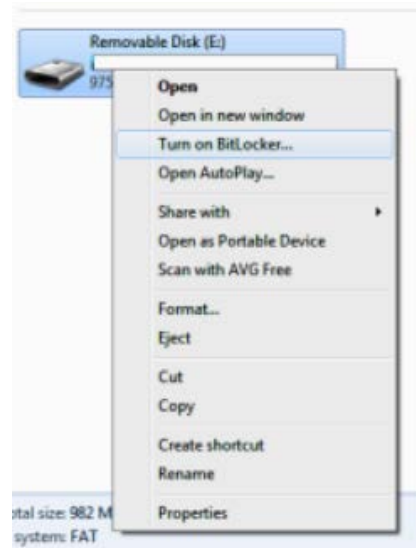


To protect sensitive data stored on USB drives, Microsoft Windows 7 features the encryption feature called **BitLocker To Go**. To prevent data from being lost or stolen, secure your USB drives using BitLocker To Go for Windows 7.

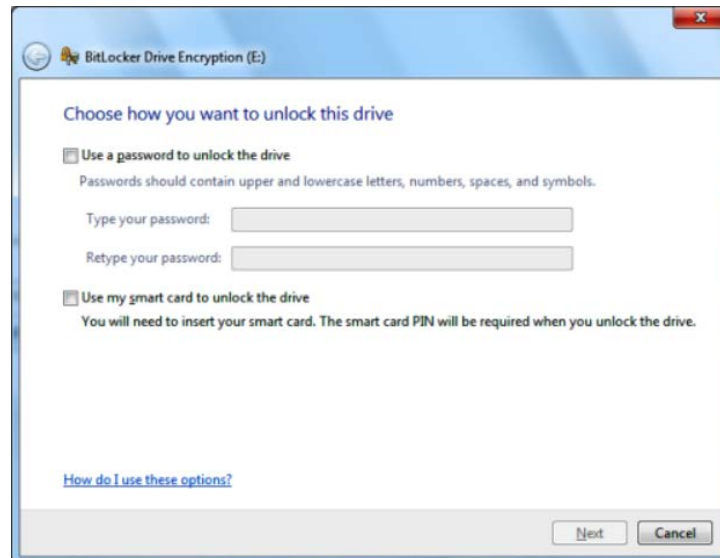
1. Insert the USB drive.
2. From the start button click on **Computer**.



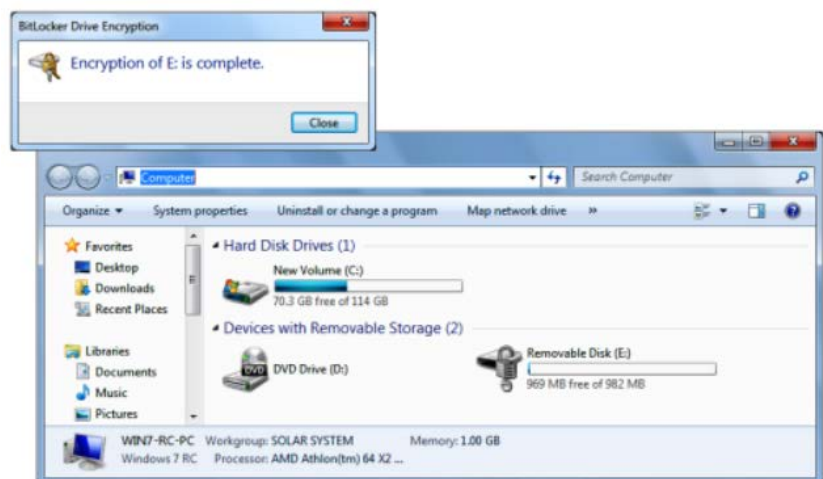
3. **Right click** on the USB drive and select **Turn on BitLocker** from the dropdown menu.
4. BitLocker To Go will begin initializing your USB drive. The process will not destroy any data that is currently on the drive.



5. BitLocker To Go will prompt you to set up a password that you will use to unlock the drive.

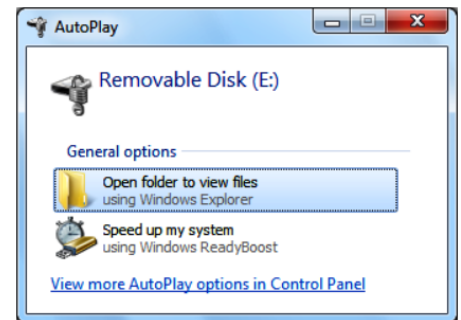


6. In the event that you forget the password, BitLocker To Go will prompt you to store a recovery key. If you choose to store the recovery key, make sure that it isn't on the same drive that you are encrypting.
7. After creating a password and saving the recovery key, the encryption process will begin. Click on **Start Encrypting** to begin the encryption process.
8. Once the encryption is completed, a confirmation dialog box is displayed. Additionally the encrypted drive icon changes.



Using a BitLocker To Go encrypted drive in Windows 7:

When you insert the encrypted USB drive in a *Windows 7* computer, you will be prompted to enter the password. Click on **Unlock**, select **Open Folder to View Files** and you will be able to access the drive and its contents.



Using a BitLocker To Go encrypted drive in Windows Vista/XP:

When you insert the encrypted USB drive in a Windows Vista or XP system, you will be prompted to install **BitLocker To Go Reader**.

- A. Click on **BitLocker To Go Reader** and it will install and run the application.
- B. From the **BitLocker To Go Reader** dialog box you will be prompted to enter your password and click on **Unlock**.
- C. From the BitLocker To Go Reader window, double-click on a file and you will be prompted to copy the file to the desktop. You won't be able to open the file directly from the USB drive.

