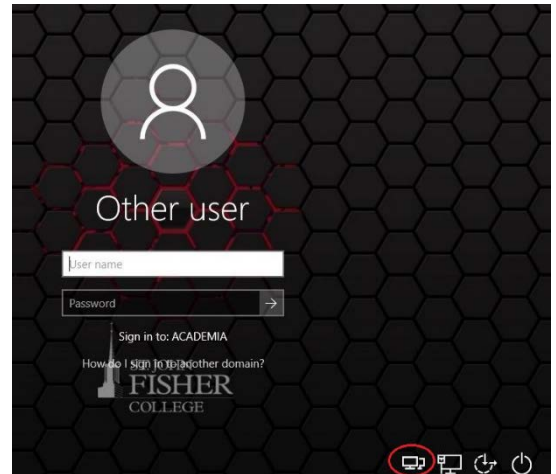
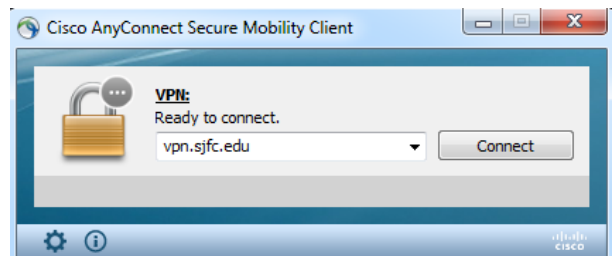


# Connecting to VPN before Login:

1. From the login screen, click on the **Network Sign-In** icon lower right of screen.

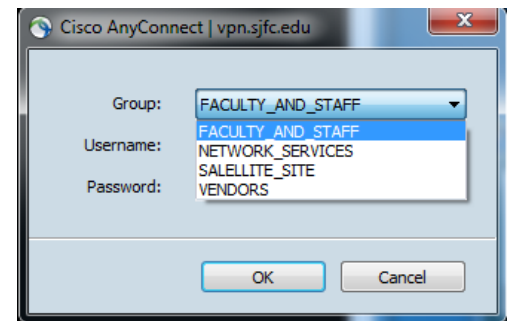


2. From the **Cisco AnyConnect Secure Mobility Client** dialog box, select or type in **vpn.sjfc.edu**



3. From the **Cisco AnyConnect** dialog box, select the appropriate **group**.

**\*\*Note:** Remote site users will need to select **SATELLITE\_SITE** (Iona College & OCC)



4. From the **Cisco AnyConnect** dialog box, enter your **SJFC username** and **password**.
5. After connected to VPN, you can log on as usual.

