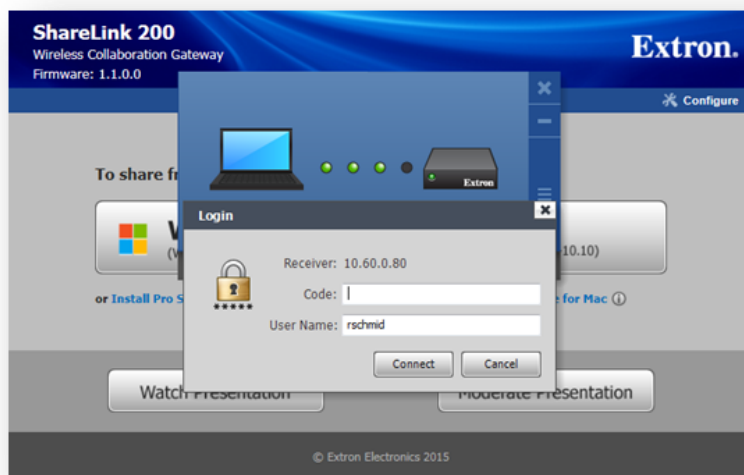


## Integrated Science & Health Science Rooms


### Classroom Technology Includes: ISHS 219 & 220

- Computer- with SSD (very fast)
- 7-96" Interactive Whiteboard –Brightlink
- Touchscreen Control
- Document Camera
- Blu-Ray – can use DVD's
- 10 Laptops for each room
- Wireless Keyboards & mice
- Interactive Whiteboard—Brightlink Projector & Pens, Easy Interactive tools v 3.06
- Echo 360, Lecture Capture System
- **Sharelink** - only available in rooms 219 & 220
  - Enables anyone to present content from a laptop, smartphone, or tablet on a display.
  - Mobile App – MirrorOp available from App Store & Google Play Store
  - Must be connected to the SJFC network
  - From a PC or Mac enter IP Address: 10.60.0.80 for ISHS 219
  - **Enter Code** and click on **Connect** – can only connect when in classroom
  - Up to 4 can share at one time



# Using Easy Interactive Tools

**1** To start Easy Interactive Tools on your computer, press the **Pen Mode** button on the remote control and make sure **PC Interactive** is selected. Then, do one of the following:



- **Windows<sup>®</sup>:** Navigate to the Apps screen or select  or **Start > All Programs or Programs > EPSON Projector > Easy Interactive Tools Ver.3.xx.**

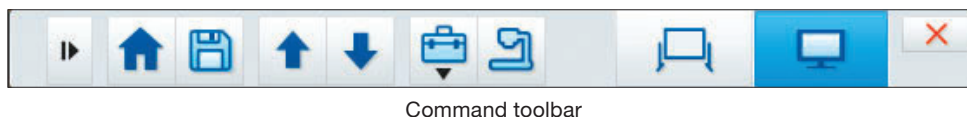
Or, double-click the  **Easy Interactive Tools** icon on your desktop.

- **OS X:** Select **Applications > Easy Interactive Tools > Easy Interactive Tools Ver.3.xx.**

The Easy Interactive Home screen appears, and   arrows appear on either side of the projected image. Make a selection or close the Home screen.



**2** Two toolbars, one for interactive (annotation) mode and one for whiteboard mode, and a Command toolbar are available. To toggle between modes, select the  Annotation mode icon on the Command toolbar to display the interactive (annotation) toolbar, or the  Whiteboard mode icon to display the whiteboard toolbar.



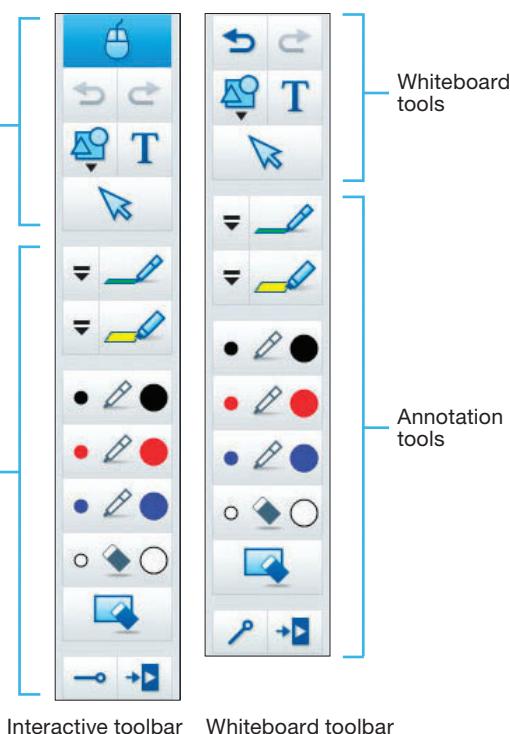
## Interactive (Annotation) Mode

In interactive mode, the toolbar appears on the projected image and lets you use the interactive pens or your finger (if applicable) as a mouse to open applications, access links, and operate scroll bars, for example.

In this mode, you can also annotate whatever is displayed from your computer or document camera and save or print your pages.

Interactive tools

Annotation tools






## Whiteboard Mode

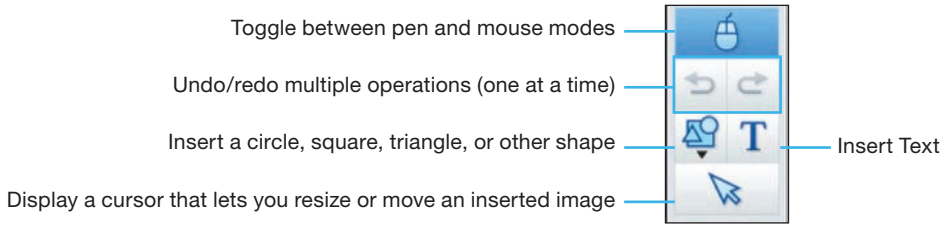
In whiteboard mode, the toolbar appears on a blank surface, background image, or pattern. You can write or draw with the interactive pens or your finger (if applicable), add images, and save or print your pages.

## Annotating

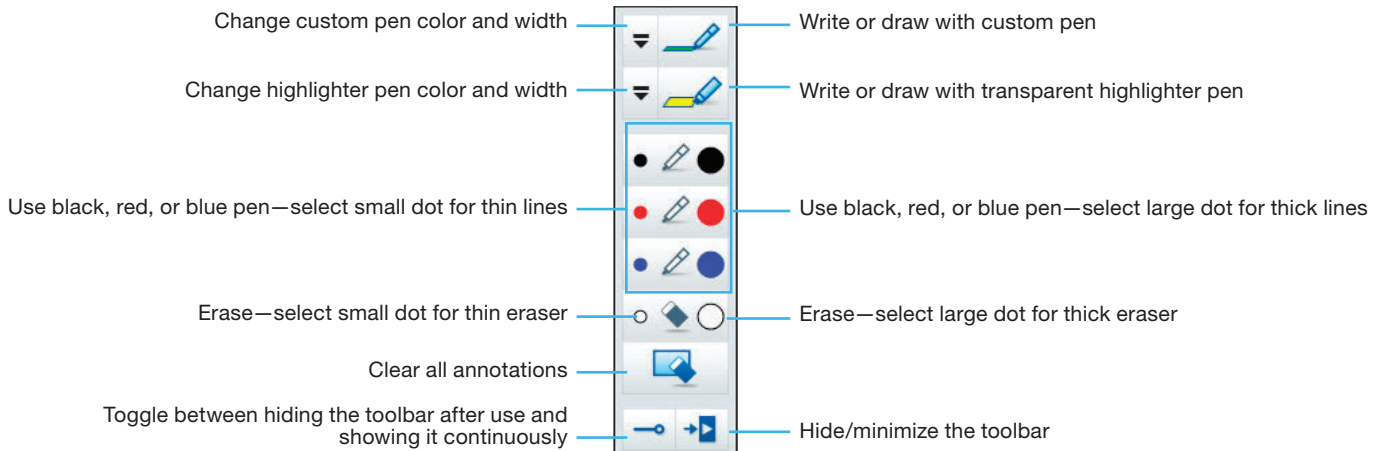
You can use the annotation tools at the bottom of the toolbar in either mode.

- 3 To exit Easy Interactive Tools, select the  Exit icon in the upper right corner of the Command toolbar. You can also minimize the toolbar by selecting the  Close icon, then select one of the  arrows to redisplay the toolbar.

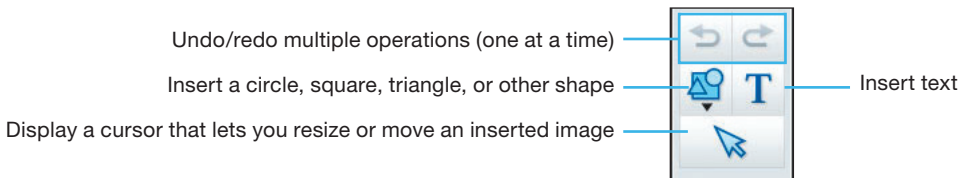
## Tools for Interactive Mode



## Tools for Annotation

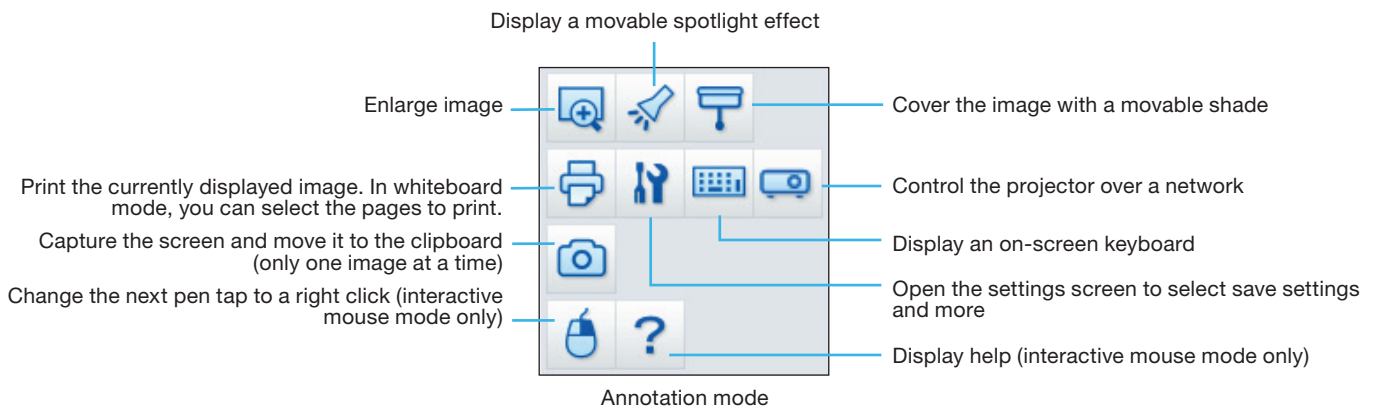


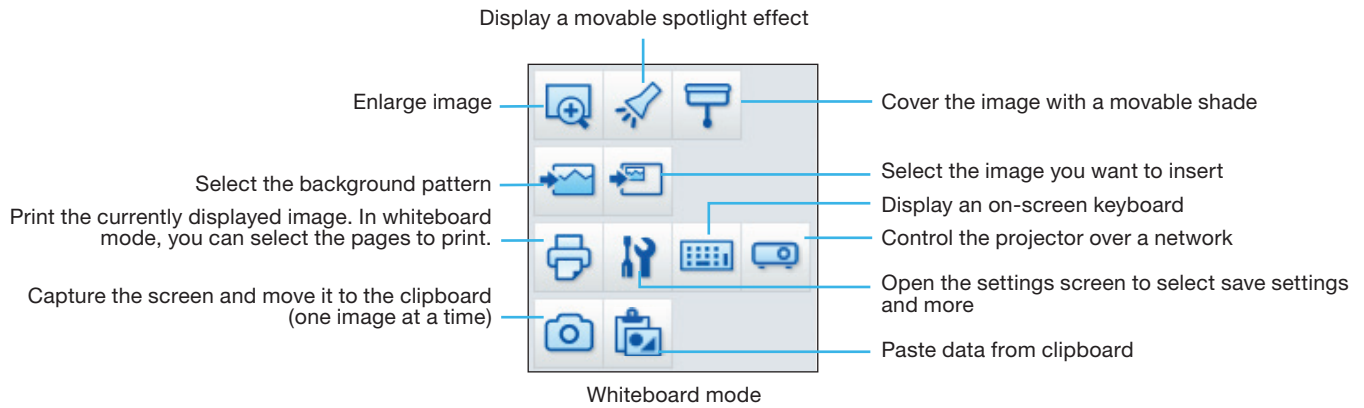
## Tools for Whiteboard Mode





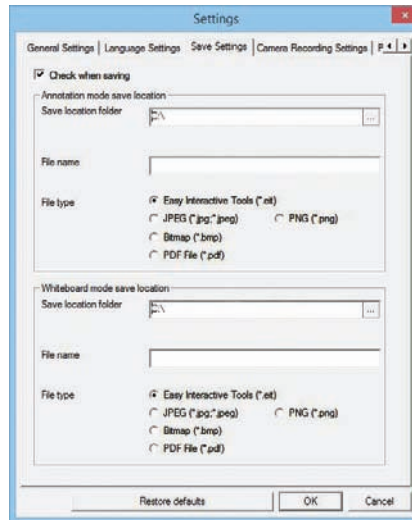
## Tools for Saving, Printing, and More

To display the tools shown below, select the  Other tools icon on the Command toolbar.





- 1 To save your screen or pages as .pdf files in your Documents > Easy Interactive Tools folder, simply select the  Save tool on the Command Toolbar. Easy Interactive Tools names your file automatically.
- 2 To select other locations and formats for saving, select the  Settings tool, then select the **Save settings** tab as shown below.



Windows

- 3 Select the location, file name, and file type for saving pages. You can save all your pages as one PDF file.
- 4 If you want to select different settings each time you save, select the **Check when saving** checkbox.
- 5 Select **OK** to close the Settings window.

EPSON is a registered trademark and EPSON Exceed Your Vision is a registered logomark of Seiko Epson Corporation.

OS X is a trademark of Apple Inc., registered in the U.S. and other countries.

General Notice: Other product names are for identification purposes only and may be trademarks of their respective owners. Epson disclaims any and all rights in those marks.

This information is subject to change without notice.

© 2014 Epson America, Inc., 3/14

CPD-40861