



Integrated Science & Health Science Rooms

Classroom Technology Includes: ISHS 117 & 118

- Computer- with SSD (very fast)
- 7-96" Interactive Whiteboard –Brightlink
- Touchscreen Control
- Document Camera
- Blu-Ray – can use DVD's
- Echo 360
- IL–RX20 Induction Loop Listener – allows the user to listen to an Audio Frequency Induction Loop (AFILS) system using a pair of stereo headphones. Only in Room - ISHS117
- Download Easy Interactive Tools v 3.06: Brightlink Software downloads. <http://www.epson.com/cgi-bin/Store/support/supDetail.jsp?oid=150747&infoType=Downloads>
Click on **Utilities**> **Easy Interactive Tools v3.06** > **Download**

Using the ITEC:

1. Log into the PC
2. From Touchscreen Control>**Touch Screen to Begin**
3. Select **Lecture or Collaborate**
 - a. **Lecture** - turns on all 7 projectors and defaults to PC input, shows same image on all 7 boards.
 - b. **Collaborate** - allows different sources to be projected
4. **Utilities button**- can choose picture mute and turn on/off individual projectors.
 - **Picture mute Front Display** – Utilities > Front Display > Blank
Try not to touch – other buttons; Scaler, Auto PC, Aspect, etc... these buttons can be used to adjust image – if pressed by accident, continue tapping until you cycle through and return to original setting.




Document Camera:

1. Select **Document Camera** as source
2. **To turn it on:** from Document Camera, press **Power** button.
3. **To turn it off:** from Doc Camera, press and hold power button.

Using Easy Interactive Tools

1 To start Easy Interactive Tools on your computer, press the **Pen Mode** button on the remote control and make sure **PC Interactive** is selected. Then, do one of the following:

- **Windows®:** Navigate to the Apps screen or select  or **Start > All Programs or Programs > EPSON Projector > Easy Interactive Tools Ver.3.xx.**

Or, double-click the  **Easy Interactive Tools** icon on your desktop.

- **OS X:** Select **Applications > Easy Interactive Tools > Easy Interactive Tools Ver.3.xx.**

The Easy Interactive Home screen appears, and   arrows appear on either side of the projected image. Make a selection or close the Home screen.

Computer screen displays in annotation mode

New file displays in whiteboard mode



Open a previously saved file in whiteboard mode

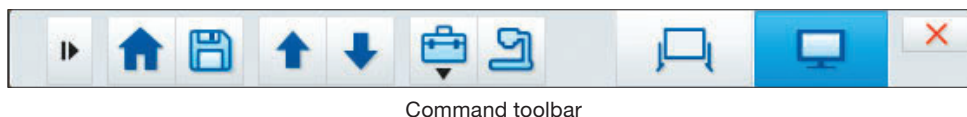
Open the most recently saved file in whiteboard mode

Image from document camera is projected in annotation mode

Web browser starts in annotation mode

Register up to six shortcuts for frequently used applications

2 Two toolbars, one for interactive (annotation) mode and one for whiteboard mode, and a Command toolbar are available. To toggle between modes, select the  Annotation mode icon on the Command toolbar to display the interactive (annotation) toolbar, or the  Whiteboard mode icon to display the whiteboard toolbar.



Interactive (Annotation) Mode

In interactive mode, the toolbar appears on the projected image and lets you use the interactive pens or your finger (if applicable) as a mouse to open applications, access links, and operate scroll bars, for example.

In this mode, you can also annotate whatever is displayed from your computer or document camera and save or print your pages.

Interactive tools

Annotation tools

Whiteboard tools

Annotation tools




Interactive toolbar Whiteboard toolbar

Whiteboard Mode

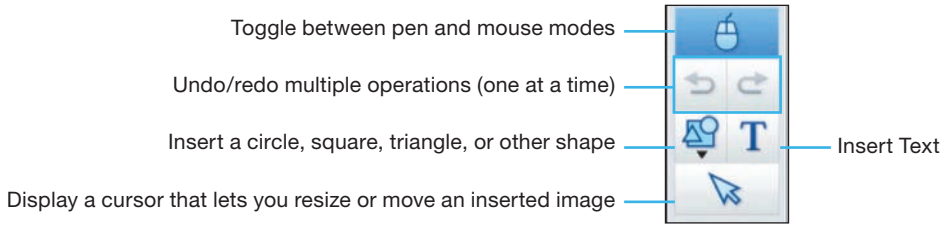
In whiteboard mode, the toolbar appears on a blank surface, background image, or pattern. You can write or draw with the interactive pens or your finger (if applicable), add images, and save or print your pages.

Annotating

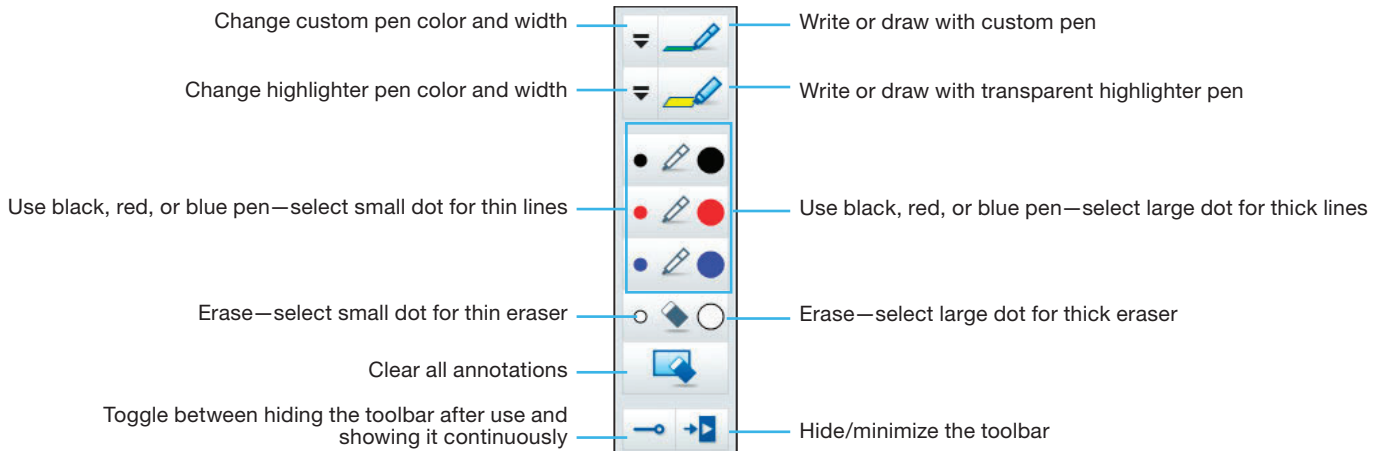
You can use the annotation tools at the bottom of the toolbar in either mode.

- 3** To exit Easy Interactive Tools, select the  Exit icon in the upper right corner of the Command toolbar. You can also minimize the toolbar by selecting the  Close icon, then select one of the  arrows to redisplay the toolbar.

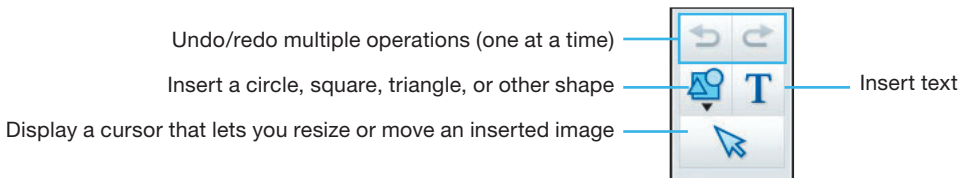
Tools for Interactive Mode



Tools for Annotation

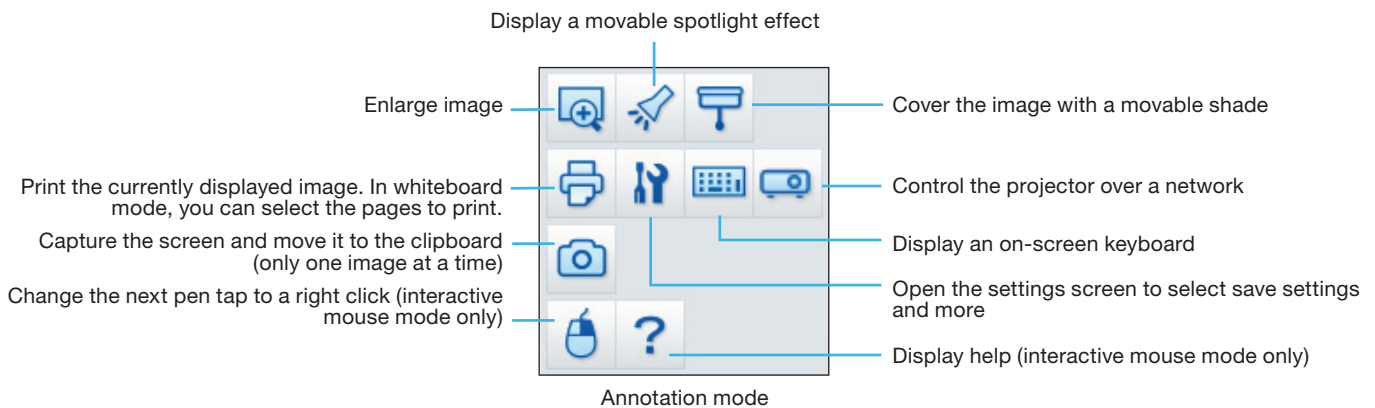


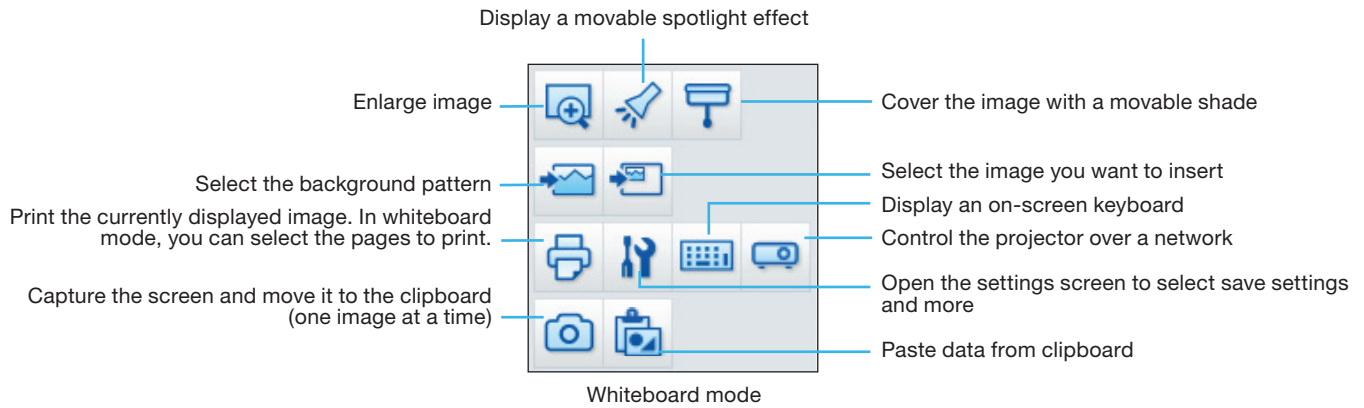
Tools for Whiteboard Mode





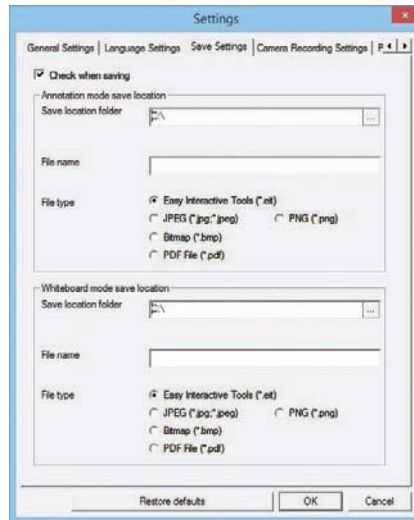
Tools for Saving, Printing, and More

To display the tools shown below, select the  Other tools icon on the Command toolbar.





- 1 To save your screen or pages as .pdf files in your Documents > Easy Interactive Tools folder, simply select the  Save tool on the Command Toolbar. Easy Interactive Tools names your file automatically.
- 2 To select other locations and formats for saving, select the  Settings tool, then select the **Save settings** tab as shown below.



Windows

- 3 Select the location, file name, and file type for saving pages. You can save all your pages as one PDF file.
- 4 If you want to select different settings each time you save, select the **Check when saving** checkbox.
- 5 Select **OK** to close the Settings window.

EPSON is a registered trademark and EPSON Exceed Your Vision is a registered logomark of Seiko Epson Corporation.

OS X is a trademark of Apple Inc., registered in the U.S. and other countries.

General Notice: Other product names are for identification purposes only and may be trademarks of their respective owners. Epson disclaims any and all rights in those marks.

This information is subject to change without notice.

© 2014 Epson America, Inc., 3/14

CPD-40861