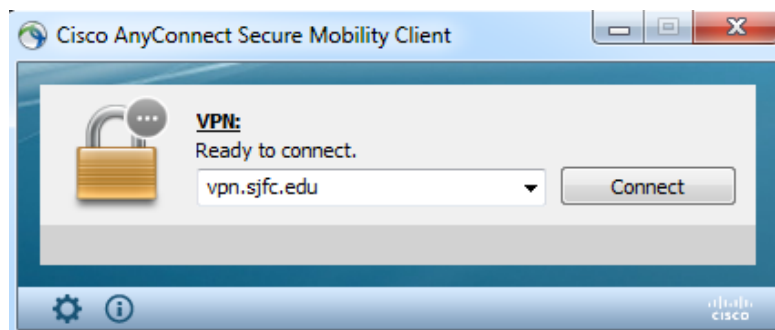
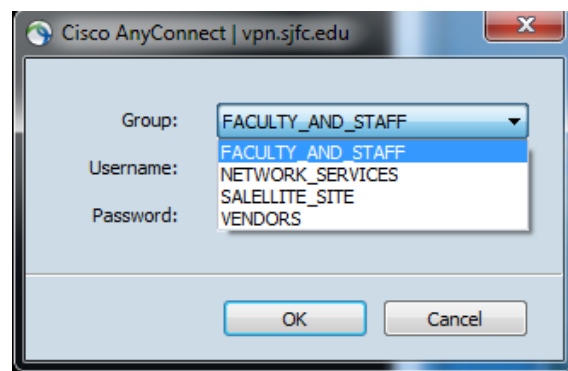



How to connect the VPN Client on a SJFC owned device:

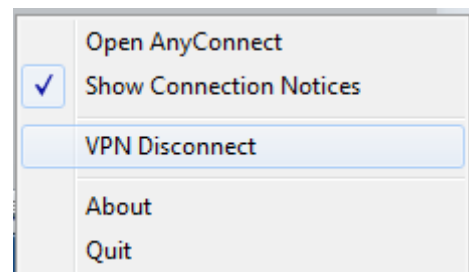
1. Launch the **Cisco AnyConnect** client
2. Enter: `vpn.sjfc.edu` and click on **Connect**.



3. From the **Cisco AnyConnect** window, select the appropriate group from the drop down.
4. Enter your username and password (network credentials) and click on **OK**.



5. After installation is completed, the VPN client will appear in the system tray (bottom right corner of PC). If the pad lock  is in the "lock" position, the VPN client is connected.
6. When done using the VPN client, right-click on the icon and select **VPN Disconnect**.



For assistance, contact the OIT Service Desk:

Web: <http://oit.sjfc.edu> Email: [oit servicedesk@sjfc.edu](mailto:oit servicedesk@sjfc.edu) Phone: (585) 385-8016